

End-to-End

The Parish Magazine of Rivenhall and Silver End



**Come to our Churchyard Service on June 26 3 pm at St Mary's
Church Rivenhall**

**A special service to remember those we have lost
and see no more**

June

2022

50p

The Following are our services For May 2022

5th June

9.30 am St Francis

11 am St Mary's

Whit Sunday (Pentecost)

Holy Communion

All Age Worship

12th June

9.30 am Silver End

11.15 am St Mary's

Trinity Sunday

Morning Prayer

Holy Communion

19th June

9.30 am St. Francis

11 am St Mary's

1st Sunday after Trinity

Holy Communion

Matins

26th June

9.30 am St Francis

11.am St Mary's

2nd Sunday after Trinity

Morning Prayer

Holy Communion

CHURCHYARD SERVICE

3 PM St Mary's Churchyard Service of remembrance for
those we have lost and see no more

Church Contacts

All Contact should be Via the Churchwardens

Churchwarden Ann Clarke

01376 514825

Churchwarden Peter Hope

01376 502605

Email phope02@gmail.com

Rivenhall Contact Carole McCarthy

01376 512781

Silver End Contact Ruth Aitken

01376 583846

Rivenhall Website

www.stmarysrivenhall.co.uk

St Francis Silver End Website

www.st-francis.org.uk/

Contact the Editor 07904 235101 or phope02@gmail.com

Holiday Time Peter Hope Church Warden

As we approach or have passed Whit Sunday or as the modern Clergy like to refer to it Pentecost on the 5th of June it is of interest to reflect on the periods of the Christian calendar and what it means. The period between Trinity Sunday (the Sunday after Whit Sunday) and Advent when we prepare for the coming birth of Christ is referred to as Ordinary Time. So why is it Ordinary? Its in this time that traditionally we would take our summer holidays, so for me it is a time less ordinary.

Why Is Ordinary Time Called Ordinary?

Ordinary Time is called "ordinary" not because it is common but simply because the weeks of Ordinary Time are numbered. The Latin word ordinalis, which refers to numbers in a series, stems from the Latin word ordo, from which we get the English word order. Thus, the numbered weeks of Ordinary Time, in fact, represent the ordered life of the Church—the period in which we live our lives neither in feasting (as in the Christmas and Easter seasons) or in more severe penance (as in Advent and Lent), but in watchfulness and expectation of the Second Coming of Christ.

It's appropriate, therefore, that the Gospel for the Second Sunday of Ordinary Time (which is actually the first Sunday celebrated in Ordinary Time) always features either John the Baptist's acknowledgment of Christ as the Lamb of God or Christ's first miracle—the transformation of water into wine at the wedding at Cana.

Thus for Anglo Catholics, Ordinary Time is the part of the year in which Christ, the Lamb of God, walks among us and transforms our lives. There's nothing "ordinary" about that!

While many will be looking forward to a Holiday in the coming months, I have recently returned from a walking holiday in the Island of Menorca part of the Spanish Balearic Islands. This was the forth time I have travelled to this beautiful Island the first time was in 1997. What I love is the rugged coastal paths that are interspersed by small hidden

coves and beaches. The beauty is breath taking and you will find a few of the pictures I took on this walking Holiday in the colour section of the magazine..

It was a holiday I had planned to do many years ago with Clare. Walk the coastal paths and sit and bathe in the beautiful coves, sadly this was not to be. However a friend of mine had also thought along the same lines so we decided it was something we should do.

We stayed at a Hotel called the Carema Beach in the south West of the Island at cala'n bosch and from there we had worked out some walks that would involve 4 to 5 hours of walking and then a bus ride back. All in all we walked over 70 miles in 6 days and having chosen to go early in the season when the weather was not too hot it worked out perfectly and I was still able to have some swims in the sea! The first walk which can be followed on the Map in the colour section was from cala'n bosch to Calla Galdana. (see pictures in the colour section).

Holidays have always been very important in my family. My Dad in his memoirs frequently mentions the holidays he took before the war with my mother. These were to places like Warners (yes they did exist before the second world war) and to guest houses in Cornwall, Cromer and Lytham St Ann's (Upmarket Blackpool). In my child hood my mum used to keep detailed records of where we went, what food we ate etc and of course we have photos that preserve those memories.

It was the same for Clare and her Mum and Dad who placed great importance on the annual holiday. Her Dad loved North Wales and the Lake District.

I thought about what people did in Biblical times? For example was the migration for the Census which led to Jesus's birth in Bethlehem like a holiday since the people were returning to the place (and tribe?) of their birth so would see lots of old friends and relatives a tribal reunion! All these activities back then and now were a diversion from the every day routine.

We have been blessed with the arrival of Jonathan as our lead

priest but I do hope he is able to take his family on holiday this year as we all need a break from the routine challenges of life. So while we may now be in "Ordinary Time" I do hope that all of you are able to take a holiday and have some time less ordinary.

Readings and Collects for June 2022

5th June Whit Sunday (Pentecost)

All Age Worship

Genesis 11:1-9

Acts 2:1-21

John 14:8-17, 25-27

Collect

Holy Spirit, sent by the Father,
ignite in us your holy fire;
strengthen your children with the gift of faith,
revive your Church with the breath of love,
and renew the face of the earth,
through Jesus Christ our Lord.

12th June Trinity Sunday

Holy Communion

Readings

Proverbs 8:1-4, 22-31

Romans 5:1-5

John 16:12-15

Collect

Holy God,
faithful and unchanging:
enlarge our minds with the knowledge of your truth,
and draw us more deeply into the mystery of your love,
that we may truly worship you,
Father, Son and Holy Spirit,
one God, now and for ever.

19th June 1st Sunday After Trinity

Matins

Readings

Isaiah 65:1-9

Galatians 3: 23-29

Luke 8: 26-39 Isaiah 65:1-9

Collect

God of truth,
help us to keep your law of love
and to walk in ways of wisdom,
that we may find true life
in Jesus Christ your Son.

26th June 2nd Sunday after Trinity

Holy Communion

Readings

1 Kings 19: 15-16, 19-End

Gal. 5: 1, 13-26

Luke 9:51-End

Collect

Faithful Creator,
whose mercy never fails:
deepen our faithfulness to you
and to your living Word,
Jesus Christ our Lord.

The 50/50 Club May 2022 winners

1st Sarah. Hope 2nd S & S Jackson 3rd Paul Scott

RIVENHALL PARISH COUNCIL

NOTES OF ANNUAL COUNCIL MEETING HELD ON 3RD MAY AT RIVENHALL VILLAGE HALL

These notes are an abridged version of the minutes

Present: Cllrs. Abbott (Chairman), Wright (Vice-Chairman),
A'Lee, Cairns, Elliott, Prime and Turner.

Also present: Parish Clerk, and 1 member of the public.

Election of Chairman

It was **agreed** (with one abstention) that Cllr. Abbott be re-elected as

Chairman. Cllr. Abbott accepted and signed the Chairman's Declaration of Acceptance of Office.

Election of Vice-Chairman

It was **agreed** (with one abstention) that Cllr. Wright be elected as

Vice-Chairman.

Public Forum

One of the swings on the Playing Field has been repaired by BDC.

The fly-tip along Rectory Lane was cleared by BDC the same day it was reported.

To appoint Council representatives to outside bodies

It was **unanimously agreed** to make the following appointments:

- RPFA Cllr. Wright
- BALC Cllr. A'Lee
- EALC Cllr. A'Lee
- BDLHP Cllr. Abbott
- HDH Charity In abeyance as Cllr. Turner is a Trustee
- Passenger Transport Liaison Cllr. Prime
- Primary School Cllr. Wright
- PRoW Liaison Cllr. Cairns
- Emergency Contact Cllr. Wright

Matters for Discussion

To reaffirm the Council's General Power of Competence

It was **unanimously agreed** that the Parish Council resolves from 3rd May 2022, until the next relevant Annual Meeting of the Council, that having met the conditions of eligibility as defined in the Localism Act 2011 and SI 965 The Parish Councils (General Power of Competence) (Prescribed Conditions) Order 2012, to adopt the General Power of

Competence.

Replacement bus shelter

The replacement bus shelter is still awaited for the Rickstones Road site and the Clerk will remind ECC that this bus shelter must be replaced at least like for like (**post-meeting note** – enquiries to Essex County Council have revealed that, without consultation with the Parish Council, ECC decided to use a redundant bus shelter from Braintree to replace the Rickstones Road glass shelter that has been maintained by the Parish Council in Rivenhall for many years. But in addition to this lack of consultation, ECC had not ensured that the replacement was ready when the removal took place. It is now anticipated that a bus shelter will not be re-installed until July).

Tree Planting on Albert Moss Playing Field

A much-reduced quote is being negotiated via BDC for the fencing of the planting in the southeast corner of the playing field. It was **agreed, with one vote against**, to accept a quote of up to £2,070 plus VAT for the fencing, to include a gate.

A watering schedule has been put in place for this area and the two specimen trees on the northern boundary.

Public Rights of Way

F/Path 48 - a report from End to End Nature Care will be sought pursuant to their walk/inspection on 27th April and will be brought to the June Parish Council meeting.

The Clerk is to request that Bellway reinstate the footpath signs from Holly Walk through to footpaths 58 and 59 near to the pond.

National Grid network consultation

A consultation on the need to build a new high voltage network between Norwich and Tilbury is open until 16th June. The section through Braintree District, passing close to Rivenhall and Silver End, is proposed to be on 50m tall pylons. Councillors were given details of the proposals and a

public information event to be held at Witham Public Hall on 4th May.

There are many questions that require answers during the consultation period and the views of residents and landowners need to be considered. Therefore it was agreed to continue to gather information and to defer a decision as to the response of the Parish Council to the June meeting.

Highways Maintenance

Matters referred to ECC for attention that still remain outstanding include:

- * Pot-holes along Church Road beyond the church;
- * Non-functioning streetlights;
- * Flooding at the Rickstones Road and Rectory Lane junction with the John Ray Walk;
- * The damaged bollard at the junction of Henry Dixon Road with Oak Road and the nearby sunken and noisy drain cover;
- * Damaged road signs along Church Road and at the junction of Park Road and Western Road.

General Maintenance

The Clerk is arranging for a second litter picker to commence working within the next week or two.

The maintenance contractor has been requested to trim back the bushes along the Beech Road garages approach road and will be requested to reinstate the damaged post(s) on the Village Green.

The final two fallen trees that came down across the John Ray Walk in the February storms are to be removed shortly.

BDC are to be requested to install lids to the litter bins within the parish to prevent access by birds and wild animals.

Planning Applications

22/01063/AGR: Application for prior notification of agricultural development: General purpose agricultural building to store machinery at Appleford Farm, Braxted Road.

Although this notification is for information only, it was agreed that the Clerk notify BDC that the existing buildings do not all appear to be currently used for agricultural purposes.

Planning results:

21/03388/HH: 70 Church Road – extension. Application withdrawn.

Bluebells development - The requests made to BDC by the Parish Council regarding the new section of path within the Bluebells development have largely been agreed by BDC including the removal of the high column lighting.

Ongoing Major Planning Issues

A12 widening

The Chairman is to participate in an on-line local parish councils update on 16th May.

BDC Local Plan

There is further delay in the receipt by BDC of the Inspector's long-awaited report. The new Local Plan cannot be Adopted until that report is received and acted upon.

Rivenhall Airfield Major Waste Site

ESS/34/15/BTE/67/01: (Protected Species Licences)

The Chairman is to produce a draft response for circulation to members for consideration before referral to ECC.

ESS/01/22/BTE: Application for temporary use of Woodhouse Lane by non-HGVs has been granted by ECC with specific conditions.

Waste site developers Indaver continue to work on their DCO application to the Government which is expected to fundamentally change the planning consent from the 'Integrated' facility towards a plant that is essentially a stand-alone waste incinerator with some associated operations on site.

Finance

The Internal Audit for 2021/22 has been completed with no comments raised by the auditor.

The Chairman signed the AGAR Section 2 to close the 2021/22 accounts.

Information exchange and items for the June agenda:

The next Three Parishes meeting
BDC re-wilding scheme
Bus shelter reinstatement

Dates of future meetings

7th June at Henry Dixon Hall and 6th July at Rivenhall Village Hall, both at 7.30pm.

NOTES OF THE ANNUAL PARISH ASSEMBLY

HELD ON 6TH MAY 2022 AT HENRY DIXON HALL, RIVENHALL END.

In the Chair: Cllr. Abbott, who welcomed everyone to the Assembly.

There were 10 attendees including 5 Parish Councillors and ECC Cllr. Ross Playle.

Due to the previous 2 year's Covid restrictions there were no previous minutes to be agreed.

Parish Council Chairman's report

As a full Annual Report had previously been circulated to all residents within the Parish, the Chairman gave a brief resume and an update report regarding the following:

Joint liaison meetings of the three local parishes Rivenhall, Cressing and Silver End which have focussed on major BDC planning matters and local tree planting.

Also the proposed electricity pylons across the parishes.

The Chairman thanked the contracted and volunteer litter pickers for their work and encouraged reporting of fly-tipping, evidence on which is being gathered using locally installed CCTV cameras.

Public comments relating to the Chairman's report

ECC Cllr. Playle indicated that the creation of a new footpath along Church Road was still progressing via the Braintree District Local Highways Panel.

Concern was raised by a resident as to why Planning Authorities did not insist on solar panels being installed on the roofs of all new industrial and residential developments. The Chairman, in his role as a BDC councillor and member of

the BDC Planning Committee, stated that this was a great frustration shared by many councillors at BDC in that the Government has not given planning powers to councils that would enable a higher level of sustainable design in new buildings, including solar panels to generate on-site green electricity.

There was great concern raised by residents, and much discussion ensued, relative to the ECC Highways contract with Ringway Jacobs. A large number of repairs and defects remain outstanding, much to the annoyance of local residents and the Parish Council with some repairs outstanding for years.

Final remarks and closure of the meeting by the Council Chairman

The Chairman thanked everyone for attending and closed the Assembly meeting at 7.25pm.

Recipe for JuneVol au Vents

By Ann Clarke

Makes 16

8 sheets frozen puff pastry, thawed

Beaten egg, for glazing

Fillings to taste

This is a specific recipe for various fillings. But adjust it to your own tastes and be creative.

I mix cooked turkey with mayonnaise, and put a spoonful in the case then put a slice of tomato, cucumber, radish spring onion, celery, like a mini salad, lovely.



Preheat oven to 220°C gas 6. Line 2 flat baking trays with baking paper. Lay 4 sheets puff pastry on a work surface. Using a 10cm-round cutter, cut 4 circles out of each sheet of pastry. Transfer 8 circles to the baking trays. Use a 6.5cm-

round cutter to cut the centres out of the remaining 8 circles. Discard or save for another use. Brush circles with beaten egg and place rings on top of each. Brush tops of rings with egg. With the dull edge of paring knife, make shallow, angled cuts along outside edges to aerate dough so it puffs when cooked. Slicing into the puff pastry makes it rise!

Carve shallow circles into the bases along inside edges of the rings. Chill trays for 20 minutes. Bake until golden, 10 to 12 minutes. Repeat with remaining 4 sheets of pastry.

Once cooked, cool on wire rack and fill with fillings:

Savoury - Ideas

Add shredded smoked chicken or cooked turkey thigh meat. Spoon in freshly made mayonnaise and finely chopped French tarragon.

Top with sliced celery stalks and garnish with herbs and celery leaves.

Add 2-3 sliced peaches marinated in Grand Marnier or brandy and chunks of creamy blue cheese such as gorgonzola. Drizzle over a spoonful of honey and garnish with fresh micro mint leaves.

Spoon in béchamel sauce flavoured with white wine, and top with flaked hot smoked salmon. Garnish with a pan-fried scallop, fresh dill and lemon zest.

For Sweet Vol-au-vents

Once cooked, dip the top ring of the vol-au-vent into caramel and then sprinkle with a little pink sea salt or chopped nuts or leave plain. Then fill with sweet fillings:

Spoon ready-made custard into each case. Top with fresh fig halves marinated in maple syrup and freshly grated nutmeg. Garnish with toasted flaked almonds.

Mix crème fraîche with a dash of vanilla extract. Spoon into cases and garnish with fresh raspberries, slices of pawpaw and micro mint leaves.

Fill with ready-made chocolate mousse mixed with Grand Marnier and whipped cream. Top with hulled fresh strawberries and dust with icing sugar.

RIVENHALL JUBILEE FETE
Sunday 5th June 2022 - starts 2pm

This takes place on Rivenhall village green between 2:00 and about 6:15 pm. Please do come along.

The Chelmsford Silver Band will be performing. There will be various stalls, stands and amusements.

Cream teas will be available, and later in the afternoon will be a Bar-B-Q.

Jackie Allen with friends from the Essex Caledonian Pipe Band will be giving us some tunes throughout the afternoon, and of course our own Charlie Staunton will be singing a selection of popular songs

There is a children's fancy dress competition (two classes - under seven and over sevens).

A wonderful raffle will be held towards the end of the fete and the winners of our village scarecrow competition will be announced.

Have a lovely day - see you there.

CHURCHYARD SERVICE

26th JUNE 2022 3 pm

ST Marys Church Rivenhall

With

CHELMSFORD SILVER BAND

A Service to remember those we have lost and see no more in Rivenhall Church yard come and enjoy the peace the birdsong and the beautiful surroundings.

ALL ARE WELCOME

COLEMANS COTTAGE FISHERIES

Lakeview Tearooms

Come and enjoy the view whilst
having a bite to eat



Open Thursday to Sunday 9am to 3pm
Breakfast, Lunches
Bar, Snacks
Afternoon Tea
Sunday Roast (01376 516383 to Book)

For more information go to:

<http://www.colemansfisheries.co.uk/witham/cafe/>

Colemans Cottage Fisheries

Little Braxted Ln, Witham CM8 3EX

FREE PARKING 01376 516383

Grow, Flourish. Succeed

**Academy
Nursery**



Opening September 2022, we are
pleased to be offering a nursery
for children ages 2 years and up.

Each session will cost £10 (£20
for a full day)

Nursery sessions will in term time:

Mornings: 8.45am - 11.45am

Afternoons: 11.45am - 2.45pm

All Day: 8.45am - 2.45pm

If you would be interested in a
place, please email

nurserysil@connectedlearningmat.co.uk
with your child's name, date
of birth and the sessions and days
you require.

Aerial Photography

Barns

Chimneys

Roof Tops

COST EFFECTIVE, SAFE ACCESS,
ROOF TOP INSPECTIONS BY
DRONE WITH NO NEED FOR
SCAFFOLD, TEMPORARY WORK
OR STRUCTURES REQUIRED.



NON DISRUPTIVE, FAST AND
PROFESSIONAL SERVICE, SAME
DAY REPORTS AND
RECOMMENDATIONS FOR
REPAIRS

FULLY CAA AND CIOB
REGISTERED, QUALIFIED AND
INSURED SERVICE. CARRIED OUT
BY EXPERIENCED SURVEYORS.

Call to discuss your requirements;
Chris: 07817219133
Jim: 07966403783
email: highsightse@gmail.com

Historic Buildings Monitoring

Building Inspections

Estate Records

ANGLIA TREE SERVICES

Specialist tree surgery

Residential & Commercial Customers

CROWN REDUCTION • FELLING • TOPPING

HEDGE TRIMMING • ALL GARDEN WORK

STUMP GRINDING

For a quick, tidy and friendly service call:

Tel: 01621 892831



7 DAYS A WEEK • EMERGENCY SERVICE AVAILABLE • FULLY INSURED



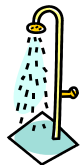
Philip Little

Property Maintenance Magician

Local service at local prices

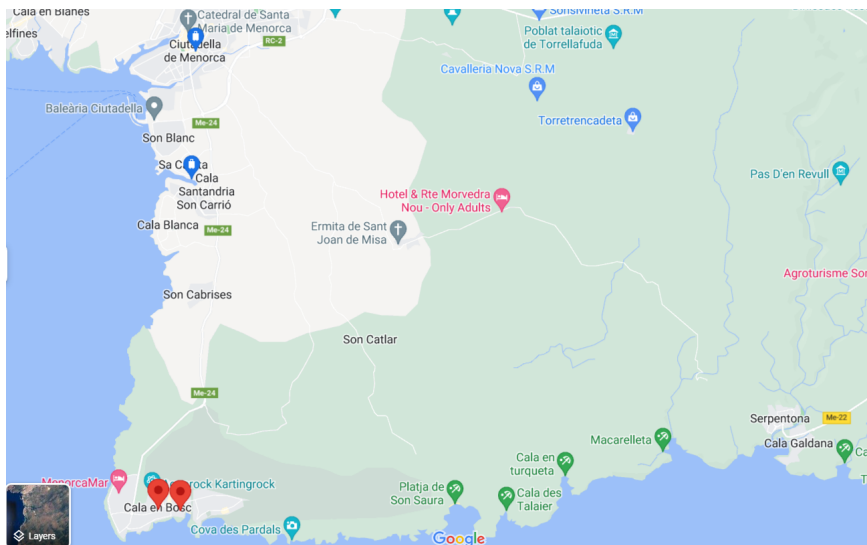
Knowledgeable and friendly

07973 129808 or 01376 515257





Walk 1 cala'n bosch to Calla Galdana this cave is accessed via a set of stairs cut into the rock



Map of the Coast from cala'n bosch to Calla Galdana some 17 km with stops at Son Saura and Macarella beach where there is a Café.



Macarella Beach on the route to Calla Galdana



An arch in the rocks walking on the northern coast from the old Capital Ciutadella to Punta Nati Lighthouse



The Museum in Ciutadella
housed in a fort over looking Port Antic



One of the Many Neolithic structures that you trip over
wherever you walk in Menorca built over 3000 years ago



A Tea Party held in Rivenhall Village Hall in 1952 for the Coronation of Queen Elizabeth.

Serving the Local Community for over 125 Years

G. COLLINS & SONS

Funeral Directors Ltd



30 RAYNE ROAD, BRAINTREE, CM7 2QH

01376 342266

4 THE STREET, WHITE NOTLEY, CM8 1RH

01376 583750

WWW.GCSFD.CO.UK

Beautiful Rooms For Rent In Witham & Braintree

We have 4 Lovely houses
2 in Witham—2 in Braintree
With and Without en-suites
£90—£130 per Week

(All inclusive of Rates, Light, Heat, and with Broadband)

See our Website:- www.jbwpartners.co.uk

Or Call

John
07850 161629

Mavis
07714 579783

Michelle
07966 323914

**HELP WITH
FUNERAL ARRANGEMENTS
RICHARDS
FUNERAL SERVICE**



01376 513114

78 Newland Street, Witham, CM8 1AH

From advice on how to register a death to making all the arrangements, we're here 24 hours a day.

Members of the National Association of Funeral Directors
A British Owned Company www.dignityfuneral.co.uk

SpeedyBroadband.co.uk

***Sick Computers my
Speciality***

- Home Networking Problems Sorted Out
- Computer Viruses Removed
- Operating System Upgrades
- Upgrade to Windows 10

**FOR YOUR FREE SURVEY AND
QUOTATION CONTACT**

Peter Hope

Peter.hope@speedybroadband.co.uk

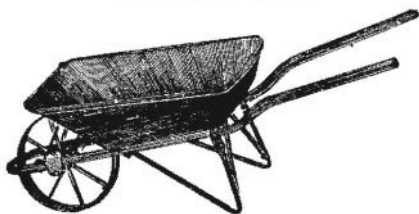
Tel: 01376 502605

Mob: 07904 235101

Website

www.speedybroadband.co.uk

**Ya Garden
Cares**



**Thorough Attention on
Bed Maintenance,
Mowing & Clearance**

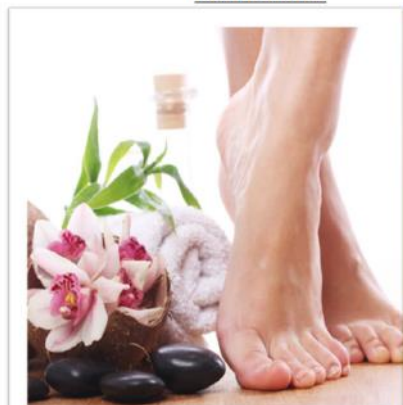
**Telephone
Barry: 07732337626**

FOOT HEALTH PRACTITIONER



THE SMAE INSTITUTE

HOME VISITS



NAIL
TRIMMING

CORNS

CALLUS

THICK NAILS

HARD SKIN

COVERING:

Chelmsford

Witham

Danbury

Stock.....

JAMES NEWMAN (MCFHP,MAFHP)

TELEPHONE: 01376 519036

MOBILE: 07793971351



**CARING FOR THE PETS OF WITHAM AND
THE SURROUNDING AREA FOR 25 YEARS**

SPECIAL O.A.P. SURGERY THURSDAYS

CAT ONLY CLINIC WEDNESDAYS

Late night surgery Wednesday till 8pm

**Surgery Opening hours
Monday to Saturday for appointments**

Tel: 01376 500038

www.brookendvets.co.uk



PC Doctor
Operations Limited

**For all your computer
requirements including:**

Virus prevention, detection & removal
Broadband, Networking, Wireless & Firewall set up
Email & SPAM filtering
Hardware Repairs & Upgrades
Software Faults & Crashes
Backup Solutions & Data Recovery
Software Installation & Removal
Hardware & Software Supplied
Website Management • Computer Training

**Health
Checks
£39.99**

Office: 01621 891064 • Mobile: 07990 565336

Email: support@pcdocops.co.uk

Website: www.pcdocops.co.uk

Monthly subscription service available to provide complete "peace of mind" and allow you to spread the cost of your IT requirements.

Please contact for further information.

REYNOLDS

CARPENTRY SERVICES

**For all Carpentry, Joinery
& Cabinet Making Requirements**

CSCS Registered

30 Years Experience

4 Years Apprenticeship

City & Guilds and

Advanced City & Guilds Qualified

Free estimates – No obligation

All building work considered

Can also make items to order

also

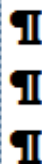
**'curtain poles, tiling, flat packs,
kitchens, doors, sheds etc, no jobs
too small'**

Contact

07889 110962

Answer phone at other times

Jeremy Larke Television services



Telephone: 01376 513645

Mobile: 07947 601619

Email: telerepair@aol.com

All Television Systems Catered
for Freesat, Freeview, Sky.

- Installations & Repairs To all makes and models
- Full Plasma & LCD Fitting Service
- Wall Mount Brackets Supplied and Fitted
- Aerial & Satellite Dishes Fitted
- Freeview, Freesat & European Channels
- View and Control Your Sky in Other Rooms
- Aerial and Telephone Extension Points Installed



Don't Delay Call Today

Janet C Davies

Dip. F.D. M.B.I.F.D

**BRAINTREE & KELEVEDON'S LADY FUNERAL
DIRECTOR**

Offering a full and Comprehensive Funeral Service

Telephone 01376 339300

For a Personal and Caring 24 hour service

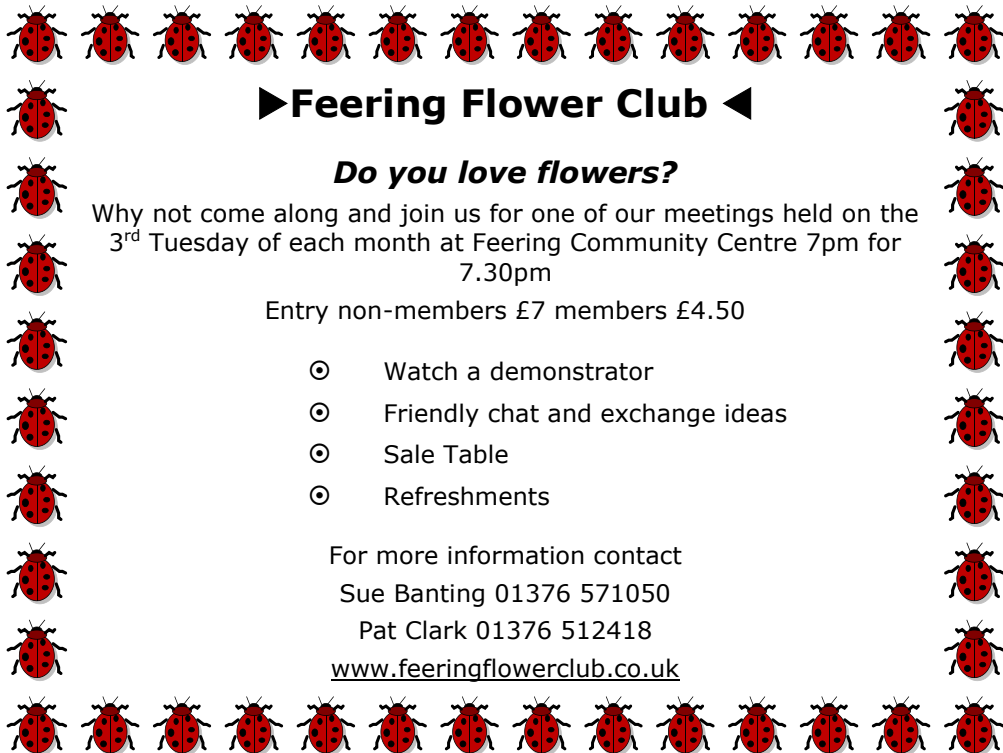
Local Chapel of Rest at Fern House 72 Coggeshall Road Braintree and
Victoria House, Trews Gardens, Kelvedon

Funerals are arranged and carried out in the Traditional Manner but
With 'The Gentle Touch'

Pre payment Plans available—Floral Tributes arranges—Woodland Burials
Bereavement Care—Low Cost Simplicity Funerals - Memorials—Printing
Catering—DWP Funerals

Part of the Hunnaball Family Group

Members of the National Association of Funeral Directors



►Feering Flower Club ◀

Do you love flowers?

Why not come along and join us for one of our meetings held on the 3rd Tuesday of each month at Feering Community Centre 7pm for 7.30pm

Entry non-members £7 members £4.50

- ⊙ Watch a demonstrator
- ⊙ Friendly chat and exchange ideas
- ⊙ Sale Table
- ⊙ Refreshments

For more information contact

Sue Banting 01376 571050

Pat Clark 01376 512418

www.feeringflowerclub.co.uk

DANIEL ROBINSON & SONS

Incorporating
W C BROWN & SONS

Independent Family Funeral Directors & Monumental Masons

A professional, caring, 24 hour service

Private Chapel of Rest

Fleet of air conditioned limousines

Horse drawn funerals available

Traditional and contemporary funeral services to suit your wishes

Funeral pre-payment plans

Arrangements may be made in the comfort of your own home, if preferred

Haslers Lane
Great Dunmow
Tel: (01371) 874518

7 Manor Street
Braintree
Tel: (01376) 320582

31 High Street
Halstead
Tel: (01787) 475533

www.drobinson.co.uk

Turning the pages of History—Tracy Scott

The photo we have this month shows the Coronation celebrations that took place in the Church Hall (Village Hall) on the 2nd June 1953. I will be getting a copy from this original which belonged to my Uncle and have it coloured to put in the Village Hall where it can be seen by all in the coming months. If you or you know anyone that was there on that day and we can add them to the list of names we already have.

You can contact me on 01376 571551 or email me at:

familybranches@btinternet.com

But, I thought this month we would look back to the Coronation of our Queen's father when he was crowned King George VI on the 12th May 1937. As we know his brother King Edward VIII abdication on the 11th December 1936 triggered this event. Queen Elizabeth II father Albert Frederick Arthur George born on the 14th December 1895 at York Cottage on the Sandringham Estate. When he became King took the name of George and not Albert. Kings and Queens can take any of their names that they have been baptised by.

So now let's look at the events that Rivenhall plan for May 1937. Earlier in the year The Rivenhall South Coronation Committee met and recommendations of Tea and Sports were received and approved. The President, Mrs Selkirk Wells appealed for helpers. I was also agreed that to commence the festivities with a short united service to be arranged by Rev. A. A. Hunt and Pastor Weller.

About the week after the Coronation and as part of the festivities the children of the village between 4½ and 8 years, had a coach trip to the Regent Cinema in Chelmsford to see the film of the Coronation and another film featuring Shirley Temple the child star of that time. (I wonder which one they enjoyed the most!) Later that week the children 8 up to 16 and accompanied by a number of parents went to London. There were 3 coaches in all and they toured the route the Coronation took and viewed all the decorations that lined the streets. This was all arranged by Pastor and Mrs Weller due to the number of Rivenhall folk desire to go with the children.

Coronation Hours: People Who Make Nosie. Between Witham and Braintree areas over many licensed holders applied for extension of their hours on Coronation Eve May and Coronation day itself to be open all day and some had asked for the whole week. Only the 12th

was granted in most cases throughout the UK. I was said of Braintree as if others 'There might be a lot of people in the town who were not natives – and there were quite a lot of them at Braintree just now – and those were the people who made noise'!

Next month we will continue with the Rector's of Rivenhall by Rev. David Nash .

RIVENHALL GARDENING CLUB

Club members met on Tuesday 1^{0th} May 2022, in Rivenhall village hall. Chairman, Mrs. Tracy Scott, welcomed members and reminded everyone that the Club will be having a table at the Rivenhall Jubilee Fete on 5th June and all contributions for sale will be gratefully received.

We were pleased to welcome Ian Currie as our Speaker for the evening. Ian has visited us on several occasions and is acknowledged as an expert on all things relating to the weather, having published books and articles and appeared on television and on the radio. He is full of interesting and amusing facts and stories of unusual weather events and we are always guaranteed a good evening. Members could recall the floods of the 1950s and various freezing and snowy winters both here and abroad that he spoke about and illustrated on the screen. In contrast he also referred to the extremes of heat in the world, 1976 being an example in this country with 90 degrees Fahrenheit for almost all of the summer months. All of this extreme weather can have devastating effects around the world. He also spoke about cloud formations, rainbows and showed us some spectacular sunrises and sunsets. As before, it was an enjoyable evening.

COMPETITION RESULTS Horticultural - No entries

Flower of the Month

1st Cyril Philpott 2nd Susan Donnell 3rd Janet Shead

Photograph of the Month

1st Sue North 2nd Susan Donnell 3rd Tracy Scott

Domestic

1st Karen Dakin (one entry)

The Club's next meeting will be on **Tuesday 14th June. 7.30pm** in Rivenhall village hall. The speakers will be Brian Cradwick and

Cyril Philpott who will talk on Fuchsias, Cacti and Succulents. Competitions will be: Horticultural — any vegetable. Domestic — 3 cheese scones. Flower of the month. Photograph of the month. Entrance is £2 to include refreshment. There will be the usual raffle and a Bring and Buy table for anything members wish to donate for sale, for Club funds. We are a small and friendly Club and new members and visitors are welcome. For further details contact the Club Secretary on 01376 512781.

AN OXFORDSHIRE GET - AWAY

John McCrae

As the weather had remained sunny and stable since our wonderful baking March weekend in Lincolnshire, Jane and I booked another few days away; this time in delightful Oxfordshire. We stayed at 16th century White Hart Hotel in Dorchester-on-Thames (not to be confused with Dorchester in Dorset), our Dorchester is now a quiet, sleepy village. Our chosen abode was a delightful 16th century former coaching inn.

We set-off early in the morning, arriving at Dorchester about 10:00 - this was so we knew exactly where our hotel was positioned. We stopped had a quick look at the high street: there was a loud humming noise nearby - it was coming from a 25 yard wall absolutely packed with hundreds of masonry bee nests - fascinating.

Then it was off to the Great Western Railway Centre in Didcot where we had booked an afternoon visit. It was a "Steam Day" so various locomotives were chugging along their lines, and we could jump on board their carriages. It was another scorcher of a day, and we looked around many of the restoration sheds and at the various exhibits and exhibitions. What a very friendly centre, and emotive too.

That night we had a lovely meal in our hotel and we slept soundly. Dorchester is probably now best known for its magnificent 12th century Abbey Church of St Peter and St Paul. We popped-in to look around and we were most fortunate - a cellist was playing beautifully in the nave as we explored. He was practicing for that night's sold-out fund raising concert for Ukraine; how lucky we were to hear his near-full repertoire.

The next day we went walking, initially to explore some of the

village highlights on their informative free local leaflet. We then headed out of the village and walked to Days Lock on the river Thames, before crossing a footbridge and ascending Wittenham Clumps where there is an Iron Age hill fort with magnificent ramparts (and magnificent views). After stupidly leaving my sunglasses on a bench at the top of the hill (!) we descended in a gentle round-about way to deep and narrow winding lane that took us to the village of Little Wittenham for an excellent, well-needed break. After lunch we meandered through the glorious wildflower water meadows which are managed by the Earth Trust.

Then it was back to "our" Dorchester where we completed the village trail. Just to the south of the village centre are the allotments (all very normal) but this is where there have been recent excavations on the site of a Roman fort, and the explanation boards are very informative. Remember, if a place has "caistor", "castor" or "chester" in its modern name, the Romans were almost certainly there.

For our final night we had our dinner in another ancient coaching inn - the 15th century George Hotel, before retiring for the night. There was no point rushing home (why rush anyway?) so we called-in to wander around the elevated, rural grounds of Wallingford Castle: whilst it is hard to imagine now, in the 12th and 13th centuries this was one of the most powerful royal castles in the country. The castle site is a vast interesting area but now with limited stone remains, as it was destroyed by Parliamentary forces after a long siege.

Spring Garden Security Advice Part 2 – Sheds, Garages and Objects

We spoke last month about garden security now we will look at sheds, garages, and objects within them. As mentioned before controlling access is your first line of defence and you may consider using good old gravel on paths and drives or round statues etc as an audible warning and/or a "Driveway Alert Monitor" (can be found by internet search). Sensitive and effectively placed lighting and CCTV may be considered to help protect outbuildings, ornaments, and statues but CCTV and lighting should not be your only thoughts on security. Don't forget motion activated lighting may also be triggered by animals and shrubs moving in the wind.

Shed and outbuilding security: If you are installing a new shed try and find a place in view of the house and neighbours. The padlock

hasp fittings of a shed should be coach-bolted to the frame and door, strengthen the fitting area with a metal plate inside and out; don't forget the hinges ensure they cannot be unscrewed. Cheap locks and padlocks are a poor investment; use good quality locks, look for a "Close Shackle" padlock or a key operated mortice lock to at least "Sold Secure" Silver or Gold standard. Protect windows with a wire mesh and fit a curtain or whitewash the windows to prevent prying eyes. NB some of this advice can apply to aviaries, kennels, barns, and other buildings of similar nature.

On garage doors consider adding locking bolts to both sides of an "up and over door" or a garage door defender in the ground in front of the door. Don't forget the other doors and windows in the garage and secure them as you would in a house. **LOCKS ARE A WASTE OF TIME IF YOU DO NOT LOCK THEM.**

When storing larger items like motorcycles, cycles, lawn mowers etc consider a fixing set/ground anchor into the concrete floor, a heavy chain and again a good quality padlock to secure it. If the chain or lock is lying across the floor it could provide a surface for it to be smashed against so, try and keep it tightly secured. Consider a shed alarm if you do not have one, there are shed alarms available that contact you on the phone when activated such as www.uwatch.co.uk .

Products that are fit for purpose can found by looking for the "Secured by Design" or "Sold Secure" logos, or on their websites www.securedbydesign.com or www.soldsecure.com .

Tips for Statues, ornaments, and pots:

- Drill and secure with quality chain/padlock larger pots and ornaments to a secure surface.
- Consider a Plant Anchors for valuable plants and pots.
- Make the plant pot heavier with a layer of gravel at the bottom.
- Some planters/pots can be marked/post-coded /etched carefully with a small Hobbyist drill or an indelible pen can work sometimes on the base.
- Hanging baskets can be secured with chains or cable ties BUT there is a danger the offender may simply wrench from the fixing point making even greater damage.
- Where possible position statues, ornaments etc in view of the

house and neighbours.

- Photograph more unusual ornaments with a scale rule included. Where possible ensure statues and ornaments are in view of a house and have good lighting. Consider using a property marking product
- To ensure good provenance only buy plants, ornaments and architectural material from reputable sources and report any suspicions to Police/Trading Standards.

For further garden security advice see the following webpages:

Sky Notes June 2022

Summer twilight dominates the June night sky save for a few hours of relative darkness around midnight. The moment of the Summer Solstice takes place at 10.14am BST on 21st June, with the lightest evenings in the week that follows.

In the pre-dawn sky, Mars and Jupiter are close together and low down in the East at the start of the month, with Saturn a bit higher and in the South East. By the end of June these planets are somewhat better placed, but it will not be until later in the summer that both Mars and Jupiter become very bright and prominent in the late evening sky.

In the morning early twilight of 22nd June, the waning Moon will be sitting between Mars and Jupiter, best seen at around 3am.

The Moon is Full on the 14th and will be riding low in the sky in the South. Located in the constellation of Sagittarius at this time, the Moon happens to be very close to the position in the sky of the centre of our galaxy, though the latter is obviously vastly further away.

The centre of our galaxy is known as Sagittarius A* and after years of work by the Event Horizon project, an image of the supermassive black hole that resides there was published in May. We cannot see the black hole itself, but astronomers have imaged the hot gas swirling around the black hole and its 'shadow' using eight powerful radio telescopes linked together across our planet.

To the right of Sagittarius is the constellation of Scorpius and on clear nights in June despite being low down in the southern part of

the sky, several of its brighter stars can be seen, including its leading star, called Antares. In the last week of June, Antares is due South at 11pm. Located about 600 light years from our solar system, Antares is a red supergiant, measuring in at a colossal 700 times larger than our own Sun. In fact it is so large that astronomers have been able to image it as a disk and have detected surface details.

The noctilucent cloud (NLC) season starts in June. Known as 'space weather clouds', NLC form at a height of about 50 miles in the upper atmosphere. The best time to view is any clear evening from around 10.30pm, looking to the North. NLC typically appear as silvery streaks or ripple structures seen against the twilight blue of the sky.

Sky Watcher

End to End Nature Care.

The weekly Wednesday evening outdoor meeting programme is in full flow now with activities each and every week, open to all and with no prior knowledge or experience necessary, just a desire to enjoy what the natural world has to offer locally. Meetings start at 7pm and generally continue until dusk, unless otherwise stated. See below for details of events planned for the next few weeks or go to our website - www.e2e.silverend.org - where the entire summer schedule can be viewed.

Recent highlights have focused on birds. As planned, we heard numerous Nightingales (Latin name *Luscinia megarhynchos*) when we visited Danbury Common. In the Spring, songbirds tend to produce a "dusk chorus" as well as the more familiar dawn performance, hence we were able to compare the Nightingale's song with that of Song Thrush (*Turdus philomenos*), Blackbird (*Turdus merula*) and Robin (*Erithacus rubecula*) all of which are enthusiastically vocal at that time of day. The Nightingale's voice, while not necessarily the most tuneful, outshines them all by its resonance and variety of phrases.

It seems to have been a relatively good year for Nightingales with many being heard locally. Their preferred habitat is dense scrub from which they can sing while remaining hidden (and we didn't see any of those we heard at Danbury, despite peering closely through binoculars), unlike the Song Thrush and Blackbird which sing from an open perch, often selecting a prominent point such as a tree top.

In the few days prior to our visit to Abberton reservoir there had been good sightings of Spoonbill (*Platalea leucorodia*) and Black-winged Stilt (*Himantopus Himantopus*), both quite notable aquatic bird species, so we arrived with high hopes. There had been heavy rain, with superb rainbows, in the half-hour before we arrived but the clouds parted for us and we enjoyed some evening sunlight. The Spoonbills and Stilts were nowhere to be seen but instead we were lucky enough to have excellent views of a Black Swan (*Cygnus atratus*) and to sight an even more unusual species, a male Hooded Merganser (*Lophodytes cucullatus*) with the bright white crest on the back of its head showing well. The Black Swan, being native to Australia, was certainly an escapee from a park or private collection. Hooded Mergansers are a North American duck species and again are kept in wildfowl collections but this bird had no rings on its legs so could possibly have been a vagrant which had somehow crossed the Atlantic.

There are some images posted on our Facebook group (End to End Nature Care), where anybody is welcome to post images or details of local observations of fauna and flora. For further details about us and any of our activities, I can always be contacted on simon@e2e.silverend.org or 07947 388180.

Simon Taylor

DATE	TIME	ACTIVITY
01 June 2022	19:00	Aquatic surveying in the River Brain at Hole Farm, Faulkbourne. Meet by the Hole Farm barns accessed at the end of the lane under the railway line (CM8 1RJ or TL802176).
08 June 2022	19:00	Earthworm surveying in Jackie Allen's garden at 5 Foxmead, Rivenhall End CM8 3HD.
15 June 2022	19:00	Whetmead, hoping for orchids. Meet behind the sewage works on Blackwater Lane (TL827138).
22 June 2022	19:00	Packhorse Bridge, Kelvedon. Meet at the entrance to World's End Lane, opposite The Sun Inn on Feering Hill (CO5 9NH or TL866192). £2 donation requested.
29 June 2022	19:00	Solitary bee surveying, Rivenhall. Meet at the Village Hall. Followed by optional glowworm survey at Bulford Mill Lane, Cressing (Meet at Cressing Railway Station).
06 July 2022	19:00	Summer Social at Stover's Hall Farm (CM8 3HQ or TL825172). Bring a bottle and/or nibbles.

Organisations in Rivenhall

Clerk to Parish Council	Keith Taylor	516975
Email parishclerk@rivenhallparishcouncil.net	meets every first Tuesday	
End to End Nature Care	Simon Taylor	01621 810141
Gardening Club	Carole McCarthy	512781
Meets on 2nd Tuesday at 7.30pm in Village Hall		
Carpet Bowls	Mick Marshall	512836
Meets every Thursday at 7.30pm in Village Hall		
Playing Fields Association	Mick Marshall	01376 512836
Spread Your Wings Dance Acam	Laura Pearson	01376 741317

Facilities

Hire of Village Hall	email rivenhallvillagehall@gmail.com	
Hire of Henry Dixon Hall	Tracy Scott	571551
Oak Store Rivenhall "Open All Hour" Tel AJ		01376 538838

Organisations in Silver End

Clerk to Parish Council	Mrs B. M. Temple	618464
Email parishclerk@silverendparishcouncil.gov.uk		
Bowls Club	Paul Mann	07551 006906
Children's Centre	Faye Savage	587960
Neighbourhood Police	Braintree Policing Dial 101	
Congregational Church	Sharon Gray	583913
Friendship Club	Maureen Green	585275
Silver End Gad Abouts	Denise Sullens Smith	07952 992782
Gardening Club	Liz Woor	585586
Guiding Group	Carol Hutchings	07857 663959
Neighbourhood Watch	Judy Hill	07896 975839
Scouting Group	Elaine Hall on +44	7885 489788
St Mary's Church (R.C.)	Vivian Phillips	583598
Tennis Club	Jason Cairns	584581
Workers Educational Assoc.	Brian Gillion	583706
Luncheon Club	Helen Thomson	583255
Doctors Surgery		583387
Silver End Heritage Society	Jackie Nesbitt	07707 084608
Silver End United Football Club	Mark Edgell	584639 Web
Site www.silverendunitedfc.co.uk		
Women's Institute	Brenda Warnes	07931 548193
Community Warden	Jackie Windard	07785 515526
Post Office in Co-op - please note that it closes at Lunchtime 1-2pm		
Closes 1 pm Wednesday and 12.30 pm Saturday		
Library: Tues & Thurs - 2pm to 6pm Saturday 9am to 1pm		

HUNNABALL

Family Funeral Services



Here **whenever** you need us

Funerals | Memorials | Pre-paid Funeral Plans

Hunnaball of Witham

1 Coach House Way, Newland Street, Witham CM8 1YJ

01376 511592

www.hunnaball.co.uk

JANET C DAVIES

Lady Funeral Directors



**Our Ladies
in Hats**

*"funerals with
a gentle touch"*

Funerals | Memorials
Pre-paid Funeral Plans

Janet C Davies of Kelvedon

233 High Street, Kelvedon CO5 9JD

01376 573691

www.hunnaball.co.uk

DRH LANDSCAPES

Est. 1987

Quality Comes 1st

**Garden Landscape and Design – Hard Landscaping – Soft Landscaping
Grounds Maintenance for Private and Commercial Premises**

- Are you planning to redesign and landscape your garden?
- Does your garden just need a little TLC or a complete makeover?
- Are you looking for assistance with regular garden maintenance or perhaps a one-off visit to get things back in order?
- Is your lawn looking tired? Would you like a new replacement lawn or artificial lawn instead?

We are a family run business with over 30 years of experience working in the ever changing world of landscape management, business regulations and horticulture, with full public and employer liability insurance, as well as being a fully registered waste carrier with the Environmental Agency.



OFFICE: 01376 514142

We welcome...



EMAIL: info@drhlandscapes.com

www.drhlandscapes.com

Harcog Centre, 77-83 Maldon Road, Witham, Essex CM8 1HP

